



LANSDOWNE
Economic Development Corporation

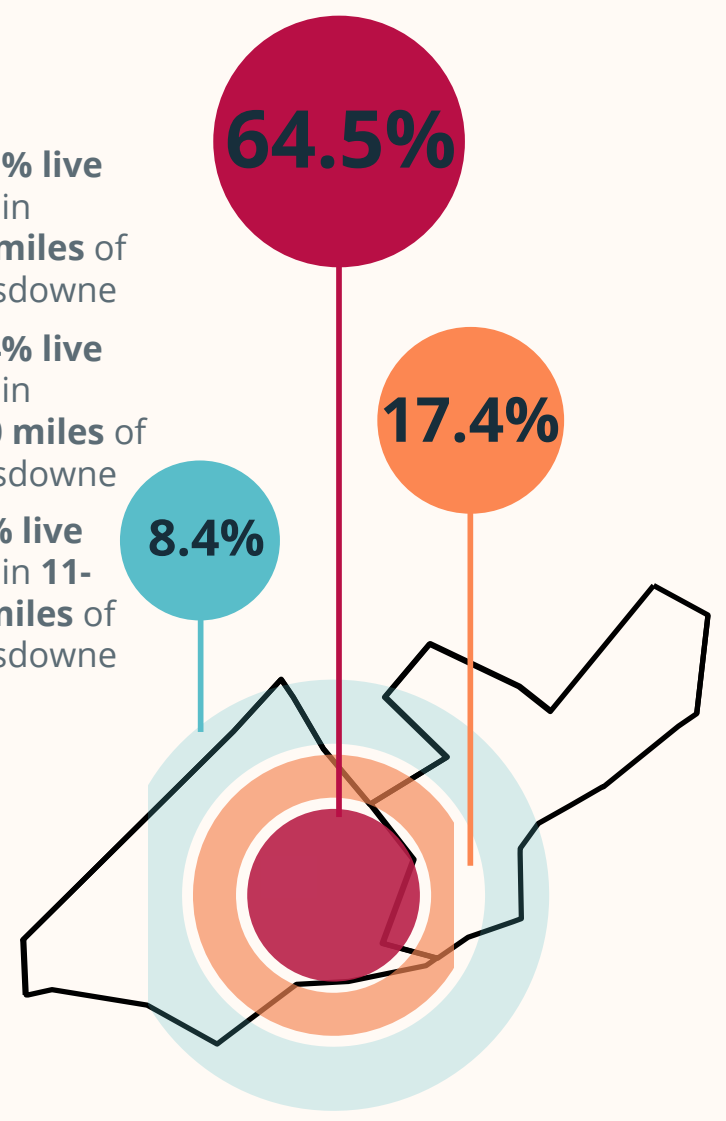
2024 LEDC IMPACT REPORT

We Reached 8,800+

In Person Audience Members

Even with our largest event of the year, *Arts on the Avenue*, postponed to 2025, nothing could keep us from connecting people to what we love most about Lansdowne.

- 64.5% live within 0-4 miles of Lansdowne
- 17.4% live within 5-10 miles of Lansdowne
- 8.4% live within 11-15 miles of Lansdowne

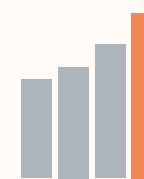


We Hosted 153 Events Including:

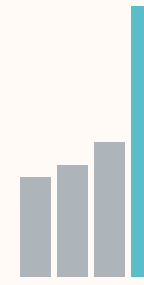


We Connected

10,613 Social Media followers across channels and platforms. Up from 9,330 in 2023



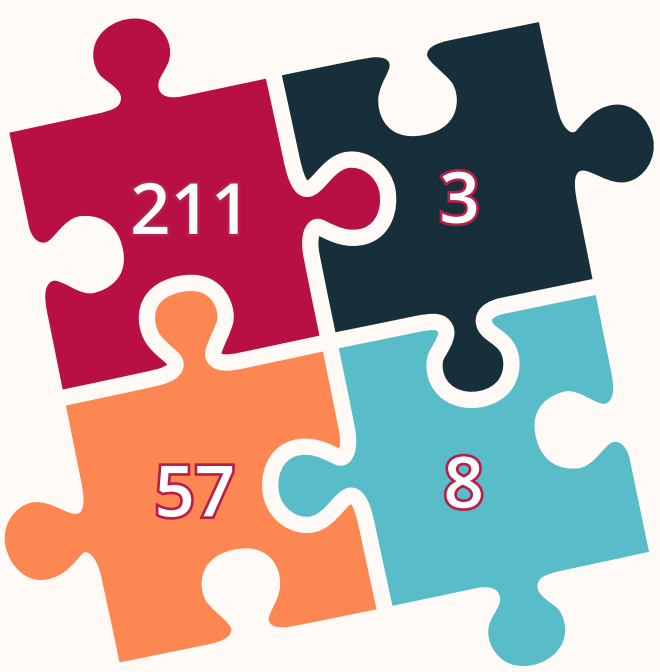
4,860 Newsletter Subscribers to the Lansdowne Link. Up from 2,423 in 2023



We Partnered with Community



We Worked Together



- 3 Full-time staff
- 8 Board members
- 8 Committees with 57 volunteers
- 211 Event Volunteers

We Created Opportunities



Initiated a MakerSpace Fellowship Pilot offering five opportunities for local emerging designers 18 - 24 years olds.

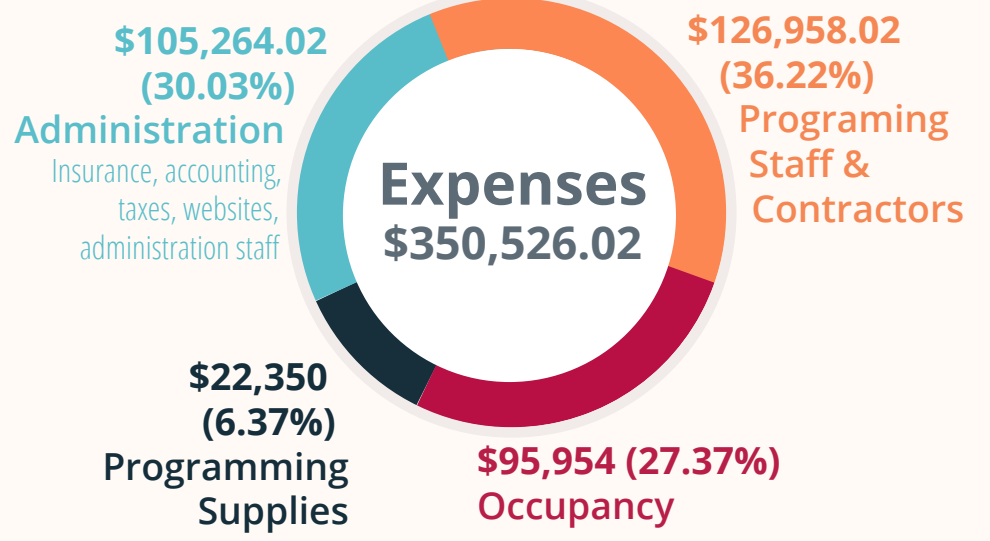
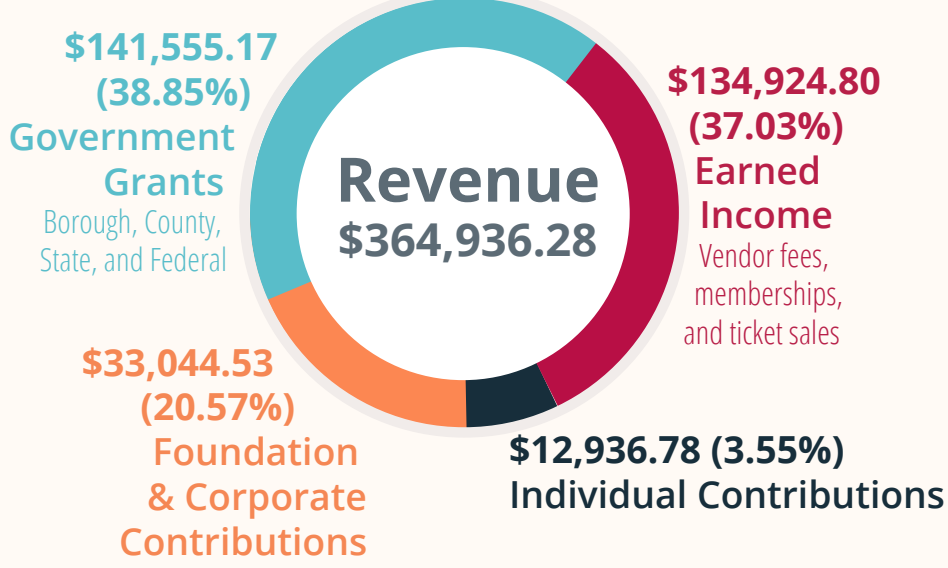


8 Classes and workshops offered for free or sliding scale, removing barriers to participation for **198 registrants**



31 Markets and Festivals that created vending opportunities for over **485 participating artists and entrepreneurs**

We Built for the Future



All to Fuel Our Mission

The Lansdowne Economic Development Corporation (LEDC) is committed to fostering a sustainable and thriving economy in the Borough of Lansdowne through strategic community and economic development initiatives, including:

Engaging the Public Through Art

Facilitating public exhibitions, workshops, talks, and cultural programming that connect neighbors and enrich the local culture.

Supporting and Empowering Creatives and Artists

Offering paid opportunities for artists, professional development opportunities, fellowships, and collaborative projects with the community.

Growing a Healthy Community

Operating a farmers market to provide healthy food options and create a space for community gathering and connection. Supporting local entrepreneurs and businesses to help our Borough economically thrive.

32 East Baltimore Ave., Lansdowne, PA | LEDC19050 | www.lansdownesfuture.org | (610) 745-4063